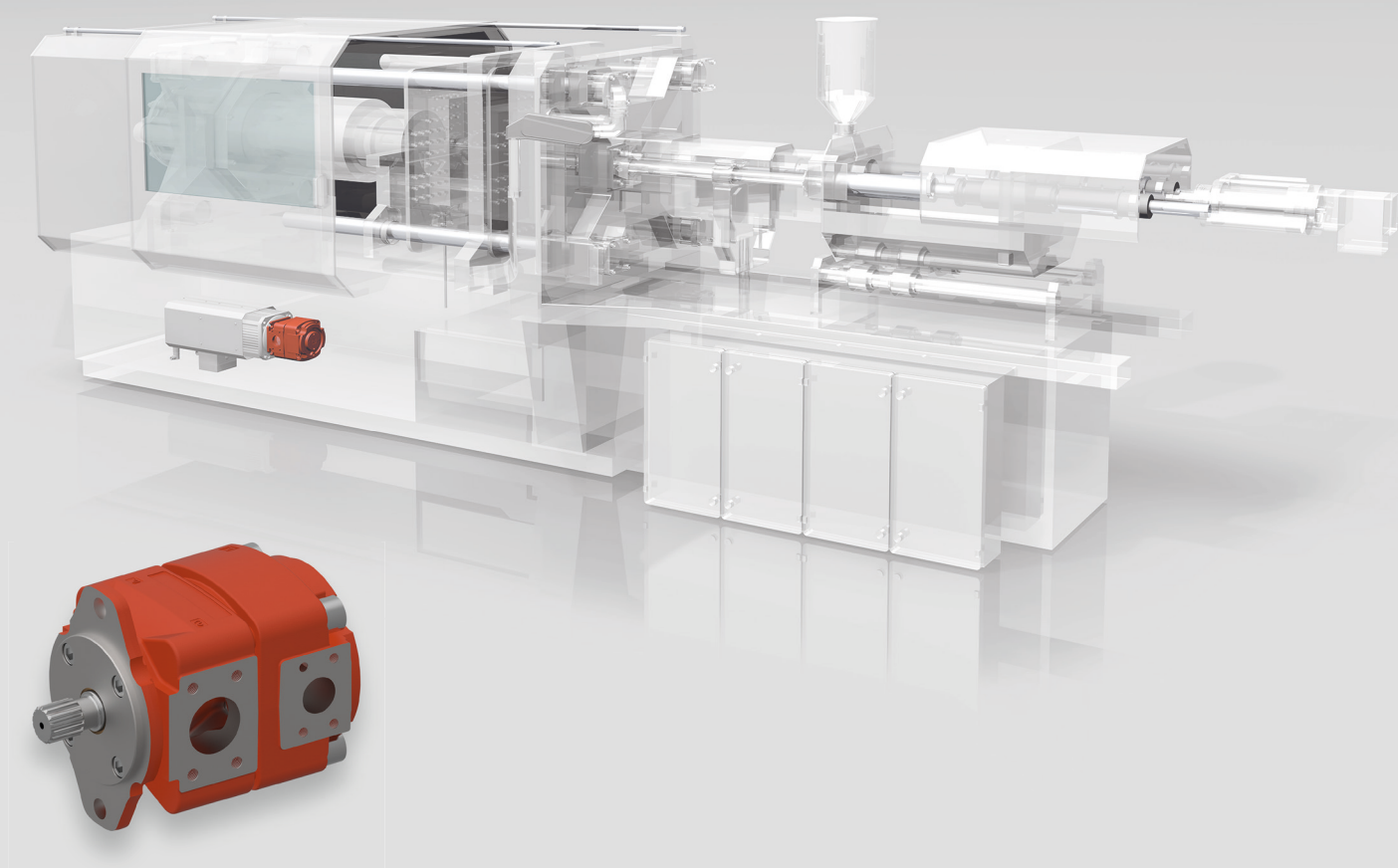


Internal Gear Units QYEH

German Engineering – Chinese Manufacturing

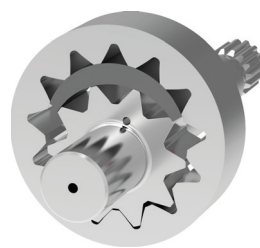


High Efficiency
and Long Lifetime

Internal Gear Units Enhance Productivity & Work Environment

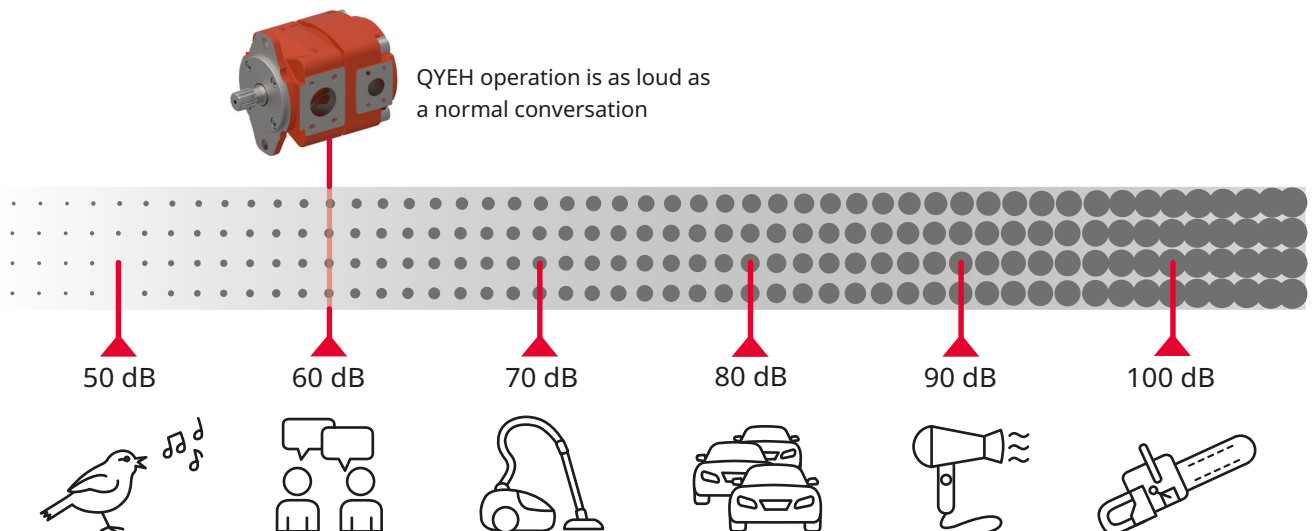
Offers multiple customizable options

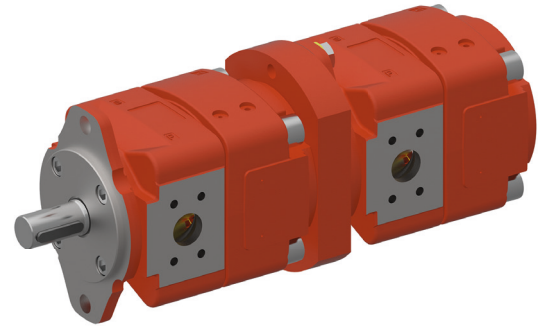
The QYEH series internal gear units are designed to deliver high customer value. The units are optimized for variable-speed drives across a wide speed range and for operation in reverse mode. They feature a single gear stage, and their compact design can be easily integrated into space-constrained machines. The QYEH series also offers additional advantages in demanding environments with high cyclic loads. The robust design supports long service life and high reliability, allowing operation with a variety of critical fluids while maintaining cavitation resistance, even under critical conditions. The QYEH's non-compensated design, featuring a special gear geometry and only two moving components, ensures low operating noise at a pleasant frequency, combined with low pulsation.



The design enables an extended pressure build-up zone across the entire symmetrically arranged crescent. In addition, the single-stage gear set operates without sensitive sealing or compensation elements while maintaining effective internal sealing of the pressure zone.

Noise levels compared everyday sounds and a hydraulic unit at 60 dB





German Engineering – Chinese Manufacturing

With decades of experience in developing and manufacturing internal gear units for highly dynamic applications, Bucher Hydraulics introduces the QYEH, manufactured at its state-of-the-art production facility in China.

Main features:

- lowest operation noise
- high efficiency
- wide speed range
- reversible
- excellent durability
- double units available

Main characteristics

Displacement ¹⁾	Flow rate	Maximum speed ⁵⁾		Code	Max. operating pressure at the pump outlet side				Torque ³⁾	Power consumption ⁴⁾
		Mineral oil	HFC		Mineral oil	HFC				
effective	1450 rpm p = 0 bar	Mineral oil	HFC		continuous		intermittent ²⁾			
[cm ³ /rev]	[l/min]	[rpm]	[rpm]		[bar]	[bar]	[bar]	[bar]	[Nm]	[Nm]
10.0	14.5	5500	5000	QYEH32-010	250	220	280	240	39.8	6.0
12.6	18.3	5100	4500	QYEH32-012	250	220	280	240	50.1	7.6
15.6	22.6	4300	3800	QYEH32-016	250	220	280	240	62.1	9.4
20.3	29.5	4000	3600	QYEH42-020	250	220	280	240	80.8	12.3
25.1	36.4	3700	3200	QYEH42-025	250	220	280	240	99.9	15.2
32.3	46.8	3400	2800	QYEH42-032	250	220	280	240	128.5	19.5
39.1	56.9	3200	2700	QYEH52-040	250	220	280	240	155.6	23.6
50.3	73.2	3000	2600	QYEH52-050	250	220	280	240	200.1	30.4
63.4	92.1	2800	2400	QYEH52-063	250	220	280	240	252.3	38.3
79.8	116	2700	2300	QYEH62-080	250	220	280	240	317.5	48.2
100.5	146	2500	2200	QYEH62-100	250	220	280	240	399.9	60.7
124.2	181	2300	2000	QYEH62-125	250	220	280	240	494.2	75.0

¹⁾ Due to manufacturing tolerances, there may be slight variations in the displacement.

²⁾ Maximum 20 seconds, but not for more than 40% of the duty cycle.

³⁾ Theoretical value without taking into account the efficiencies at the maximum permissible continuous pressure for mineral oil at the unit outlet.

⁴⁾ Theoretical value without taking into account the efficiencies at the maximum permissible continuous pressure for mineral oil at the unit outlet at n = 1450 rpm.

⁵⁾ Maximum rated speeds for inlet pressure > 0.95 bar (abs.) and outlet pressure > 100 bar. For operation with higher speed contact Bucher Hydraulics.

Smart Solutions. Superior Support.®

[bucherhydraulics.com](https://www.bucherhydraulics.com)

Bucher Hydraulics (Wuxi) Co. Ltd.
#225 Xitai Road, Meicun, Xinwu District
Wuxi, 214112, China
info.cn@bucherhydraulics.com